

ELM STREET SCHOOL NEWS  
256 Elm Street,  
Summerside, PE C1N 3V5  
(902)888-8490  
Fax: (902)888-8307

A Safe, Friendly and Welcoming School

### SCHOOL CALENDAR 2009-2010

#### **SEPTEMBER**

- 1 WSB Administration Meeting  
3 Orientation Day for Teachers  
4 School Development Day  
7 Labour Day  
8 First instructional day for students  
16 Parent Information Night - 6:30 p.m.  
22 HPV Vaccine (Grade 6 girls)  
23 School Pictures (French Immersion)  
24 School Pictures (English)

#### **OCTOBER**

- 2 Elm Street Official Opening (1:30pm)  
6 Primary Math Assessment (Grade 4)  
7 Primary Math Assessment (Grade 4)  
12 Thanksgiving (No classes)  
15-16 PEITF Annual Convention (no classes)/CUPE Annual Convention

#### **NOVEMBER**

- 3 Elm Street Remembrance Day Service (1:15)  
5 Parent Teacher Interviews (no classes)  
6 Professional Development Day (no classes)  
11 Remembrance Day (no classes)  
24 HPV Vaccine (Grade 6 girls)  
26 Report Cards

#### **DECEMBER**

- 11 Christmas Concert (10:00am Family Names beginning with A-M;

- 1:00pm N-Z)  
22 Last Day of Classes, 2009 (full day)

#### **JANUARY**

- 4 First Instructional day, 2010

#### **FEBRUARY**

- 1 School Development Day (no classes)  
2 French Immersion Parent Information Meeting (Elm Street School at 6:30pm)  
10 Grade 1 Registration for 2009-2010  
15 Islander Day (No classes)

#### **MARCH**

- 2 Report Cards  
5 Parent Teacher Interviews (no classes)  
15-19 March Break  
24 HPV Vaccine (Grade 6 girls)

#### **APRIL**

- 2 Good Friday  
5 Easter Monday  
21 Parent Information Night for new Grade 1 Parents 2009-10 (6:30pm)

#### **MAY**

- 7 Area Association P.D. Day / CUPE 3260 Convention (no classes)  
10 Grade 1 Screening (current grade 1's stay home)  
24 Victoria Day (No classes)  
25 Grade 3 French Immersion visit from Greenfield.

#### **JUNE**

- 4 New Grade One Students for 2010-2011 to visit Elm Street. (Present Gr. 1 students will stay home)  
24 Grade Six Closing Ceremony

- 1:15 p.m.  
25 Final Report Card  
25 Last Instructional Day for Students (full day)  
30 Last School Day for staff



#### **BELL SCHEDULE**

- 8:25 Playground Supervision Commences  
8:40 Students enter school  
8:47 O'Canada  
8:50 Classes begin  
10:15 Recess  
10:30 Classes resume  
12:05 Recess  
12:35 Lunch  
12:50 Classes resume  
3:00 Bus Students exit  
3:05 Walkers exit

#### **CHARACTER MATTERS:**

Theme of the Month for September is: Responsibility.

#### **PRINCIPAL'S MESSAGE:**

I would like to welcome all families back to a new school year. I hope the summer treated everyone well and there was lots of time spent relaxing with your family. As we opened the doors to Elm Street we were thrilled to see the incredible transformation made within these walls; it was obvious there were no relaxing moments spent here. The make-over was incredible and I would like to extend a huge thank you to McLean's Construction, the Department of Public Works, and the Western School Board for giving our students what they truly deserve. I would also like to express my gratitude to Elm

Street's teachers and custodial staff for making a second transformation. Within days they were able to unpack and clean an entire school so students and parents could appreciate the final product. What an amazing team we have here!! THANK YOU!

I would also like to take this opportunity to inform you that this year we will be having our monthly assemblies focused on character traits and title it "Character Matters". Students and staff will sign up for a trait and educate the rest of the school about it's meaning. They can do so through art, reading messages, writing poems, scripts, etc., and by presenting to the school. We look forward to seeing their talents and encourage you to join us so you can experience it as well.

#### **Parent Visits**

Parents are always welcome to join our team here at Elm Street. We do appreciate your efforts to make the home and school connections possible as this can only lead to greater success for our students. Our duty is to teach your child by offering a safe and accepting environment. To do so, it is extremely important that visitors do not go on the playground without permission. You see yourself as a helper, little ones see you as a stranger and possible danger. We appreciate your support in this matter as we are sure you feel comfort in knowing that we will not allow a stranger to be near your child.

#### **Character Matters**

This months theme is *Responsibility*. Staff and students have been discussing expectations and what responsibilities we all have at Elm Street School (ie. Come to school on time, be ready for class, follow rules, practice fire and lock down drills, be kind, etc). We encourage all visitors to read the recognitions people have been given on the *Responsibility-Tree* outside the main office. They will be picked off the

tree at the end of the month and draws will be made for prizes. You may want to take a moment to review what responsibilities you and your child have at home. "Parents can only give good advice or put them on the right paths, but the final forming of a person's character lies in their own hands." ~Anne Frank~



#### **SCHOOL MILK PROGRAM** **2009-10**

White milk - 45¢ (blue tokens, blue paper with white milk on them when we run out of tokens).

Chocolate milk - 70¢ (brown tokens, white paper with chocolate milk on them when we run out of tokens).

We sell bundles of 10 white for \$4.50 or bundles of chocolate for \$7.00. The milk cooler is located in the lower level of the school. Milk tokens can be bought any day. We sell them individually or in packages of 10.

All proceeds of the milk program go to the Breakfast Program or sponsor free milk days for students.

Many students play a big role in the milk program, sorting and bagging tokens, sorting, counting, and rolling money weekly, cleaning milk fridge, and buying supplies for the milk program.

The Milk Program started on Monday, September 14<sup>th</sup>, 2009. Should you have any questions, please contact Stacy Delaney.



#### **SNEAKER CHECK**

Just a friendly reminder to parents when buying sneakers, to please look for ones that are non-marking. We have a wonderful new gym floor and would really like to keep it looking clean. If your child happens to already have sneakers that mark the floor we will help

correct the issue. We may ask to trade with another pair from home. Thank you very much for your cooperation.



#### **"FLY LIKE AN EAGLE" KM CLUB**

This year we will have a km club open to students in grades 3-6. It will be offered during noon hour outside on the outer perimeter of the school property. We have a 1 km loop mapped out for the students to run, walk or jog. The students will each have a card that they carry with them and upon completing a loop their card is punched. They have goals to work toward - 5km, 10km, 15km and so forth...at each level the students receive a coloured shoe token. Once a child has 5 punches on his/her card, they get a token.

It is our hope that this club will encourage students to embrace walking/running /and exercise. The students will be able to witness the results of their time, commitment and energy. It is important to help children develop an enjoyment for healthy physical exercise. Running/walking helps build the students confidence, self-esteem and hopefully will help lead them to an active lifestyle.

#### **CROSS COUNTRY**

Age Classifications:

**Pre-Novice** - under 10 as of Dec. 1st of the school year.

**Novice** - under 12 as of Feb. 1st of the school year.

**Bantam** - under 14 as of Feb.1st of the school year.

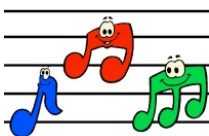
We will also have some students going on to compete for Elm Street School at the Zone Cross Country meet. The cross country team will also be running during the noon hours. We will get the km club up and going

then work with students who are interested in running a race. The cross country team will be made up of 15 runners per group - for example: pre-novice; 15 girls and 15 boys. That is the maximum number of runners per category we are able to take to the competition. Those students interested in cross country will have a permission slip sent home to be signed. We will be using the trail behind the school for some of our training and the students must have parental permission to be on the trail for their running. Distances each group will be required to race: pre-novice group (usually grade 3-4) must run 1.5km; Novice group (usually grade 5-6) must run 2.5km; Bantam group (some 6's) must run 3.0km. Happy running!

#### PHYSICAL EDUCATION

Students in grades 4,5 and 6 are required to change into attire which is different from what they are wearing that school day. (ie. shorts/gym pants/t-shirt) It is especially important to change for personal hygiene reasons for students in the upper elementary classes. A reminder that Axe sprays are not permitted in school due to severe allergies.

Students in grades 1,2 and 3 should wear loose fitting clothing suitable for movement and play on their scheduled physical education day. All students should have properly fitting sneakers that fasten securely, for safety reasons. Please be reminded to select non-marking soles when buying indoor sneakers. Your cooperation and support is greatly appreciated :)



#### NEWS FROM OUR MUSIC DEPARTMENT

Primary Choir for interested students in grades 1, 2 & 3 will be every Tuesday at 12:05 - 12:35 p.m. Tuesday, September 22nd will be the last day for students to join. This year the Primary Choir will be performing at the East Prince Family of Schools Christmas Concert, the Elm Street Christmas Concert and the East Prince Music Festival. At all performances, choir members are expected to wear white tops and black bottoms. They will also be performing on October 2<sup>nd</sup> at our official opening.

Elementary Choir for interested students in grades 4, 5 & 6, will be every Friday at 12:05 - 12:35 p.m. Friday, September 25<sup>th</sup> will be the last day for students to join. This year the Elementary Choir will be recording for the Children's Wish Foundation's Christmas CD in October, the Elm Street Christmas Concert and the East Prince Music Festival. At all performances, choir members are expected to wear their own combinations of black and white clothing. They will also be performing on October 2<sup>nd</sup> at our official opening. Here's looking forward to a wonderful year!



#### LIBRARY

Mrs. Howatt is hoping that the Library will reopen on Monday, October 6<sup>th</sup>. She would like to thank everyone for their patience as she continues to unpack boxes.

Just a friendly reminder to the students who still have books out from last school year. You will not be able to get new books until the book is returned or paid for.

There will not be a Scholastic book fair this Fall because of the delay in the Library opening. Instead there will be a used book sale on Thursday, November 5<sup>th</sup> on parent-teacher interview day.

If you have anything to donate it can be sent to the school

on November 3<sup>rd</sup> and 4<sup>th</sup>.

All proceeds from the sale will go towards the IWK Telethon.

#### AGRICULTURE CALENDAR

Congratulations to Jill Culleton and Benjamin hancock for having their artwork selected to be in a national calendar! These students entered the contest in May of 2008 when they we in grade "32" and now are published illustrators!



#### PUBLISHED POETS

Justin Larsen, Jill Culleton, and Robert Larsen all have their poems published in a national book of poetry for young Canadians entitled, Harbour. Way to go, poets! You may purchase a copy of the book at Coles or Indigo book stores.

Some Elm Street students had their poems published in a book entitled, Fireworks, Fleas and Bumblebees: A Book of Verse. Congratulations to Ethan McShane, Sophie Perry, Justin Larsen, Gracie Johnston, Robert Larsen and Noah Richarson (former student in grade 8 at SIS)! Be proud of your poems!

#### SUMMERSIDE RINGETTE

Summerside Ringette is gearing up for it's second exciting season! We are still accepting registrations for children 5 and up. If you have any questions, contact Becky at 394-5134 or [rimacphee@hotmail.com](mailto:rimacphee@hotmail.com)



### **SUMMERSIDE FIGURE SKATING**

The Summerside Figure Skating Club held registration for the CanSkate (Learn to Skate program) and the Figure Skating Programs on Saturday, September 19<sup>th</sup> from 10:00 a.m. - 1:00 p.m. and Sunday, September 20<sup>th</sup> from 1:00 - 4:00 p.m. You can also register on Friday, September 25<sup>th</sup> from 6:00 - 9:00 p.m. at the Credit Union Place lobby. For further information please contact Kelly at 436-0600 or Leona at 436-9196.



### **SCOUTING INFORMATION**

Open to both boys and girls, the Scouting organization is over 100 years old in Canada.

If your child enjoys a variety of activities, then Scouting is for you!

Summerside Scouting Groups include: Beaver (age 5-7/grade K-2, meet Wednesdays 6:00 - 7:00 p.m.); Cubs (age 8-10/grade 3-5, meet Tuesdays 6:30 - 8:00 p.m.); and Scouts (age 11+/grade 6+, meet Wednesdays 6:30 - 8:00 p.m.)

For further information, please contact: Thane Smallwood at 436-5509 or at [thane@peibag.com](mailto:thane@peibag.com) Check out our website at [www.scouts.ca](http://www.scouts.ca) - especially the About Us, For Parents and For Youth sections.



### **GIRL GUIDES**

Summerside and area Girl Guides of Canada registration night was held on

September 17<sup>th</sup>, 2009 at the St. Eleanor's Community Centre, West Drive, Summerside.

The fees for registration are \$110. Discounts fees for families with 3 or more girls registering. Payment plans and/or assistance could be available.

For further information, please contact: PEI Girl Guides of Canada at 1-902-894-4936. Tammy at 836-5412 or Peggy at 888-2367.

### **EXPRESSIONS DANCE**

"We encourage the dancer in you". Ballet, tap, jazz, hiphop, boys hiphop. Ages 2-12 years. Further information available by calling Effie at 724-2526.

### **PEI POTATO INDUSTRY KIDS SPUD RUN**

The Kids Spud Run is a **FREE** fun event for kids taking place as part of Marathon Weekend at the CDPEC Race Track on Saturday October 17<sup>th</sup> from 11:00am - 12:00pm.

The event is open to all kids up to 14 years old. Children under 5 must be accompanied by a parent or guardian.

The first 300 kids registered will receive: A free t-shirt; All registered kids will receive: A goodie bag Completion Certificate.

Registration will be held at the CDPEC Race Track on Saturday October 17<sup>th</sup> from 10:00-10:45am. At 10:45 there will be a fun warm up session and the Kids Spud Run will begin at 11am.

[www.princeedwardislandmarathon.com](http://www.princeedwardislandmarathon.com) for more information call: Alicia at 569-8692. Information and registration form available in the school office.

### **FREE BIKES, WEEKLY PRIZES, SUPERVISED BICYCLING TO SCHOOL**

The Bicycle Bus provides safe and adult supervised transportation to and from our school by bicycles. The Bicycle

Bus departs Greenfield School at 8:15 a.m. and travels along the Confederation Trail to Elm Street. Students can wait along the route and join the bus when it passes by. At the end of the day, the Bicycle Bus leaves Elm Street at 3:05 p.m. Why ride??

The Medicine Shoppe Top Cyclist Award offers students a monetary prize which is held in trust until the end of October at which time the student may have earned enough money for a free bicycle. The Subway Healthy Start Award provides a free healthy snack one day a week for the class with the most participation in the program.

The Heart and Stroke Foundation Top School Award acknowledges the top school in all of Summerside (Elm Street won the Award last week). The MacQueen's Bicycle Shop Benefits of Cycling Award offers weekly prizes to the students who participate. Visit [www.bikingforbreakfast.com](http://www.bikingforbreakfast.com) or call Ken at 888-3878 for more info.

### **WEST ISLAND KARATE CLUB**

Chito Ryu traditional Karate is one of the oldest styles in Canada and has been on PEI for over 35 years. It focuses on good manners, physical conditioning and self-defense. This karate style can be practiced by all ages both male and female and does not require special athletic abilities or flexibility to join. Classes are at Elm Street Elementary School on Tuesday and Friday evenings at 7:00 p.m.

A free demonstration and information session will be held on Tuesday, September 29<sup>th</sup> at 7:00 p.m. for anyone interested in seeing various levels of students (white to black) performing karate techniques. For further information please contact: Peter Richard - 888-2314.